

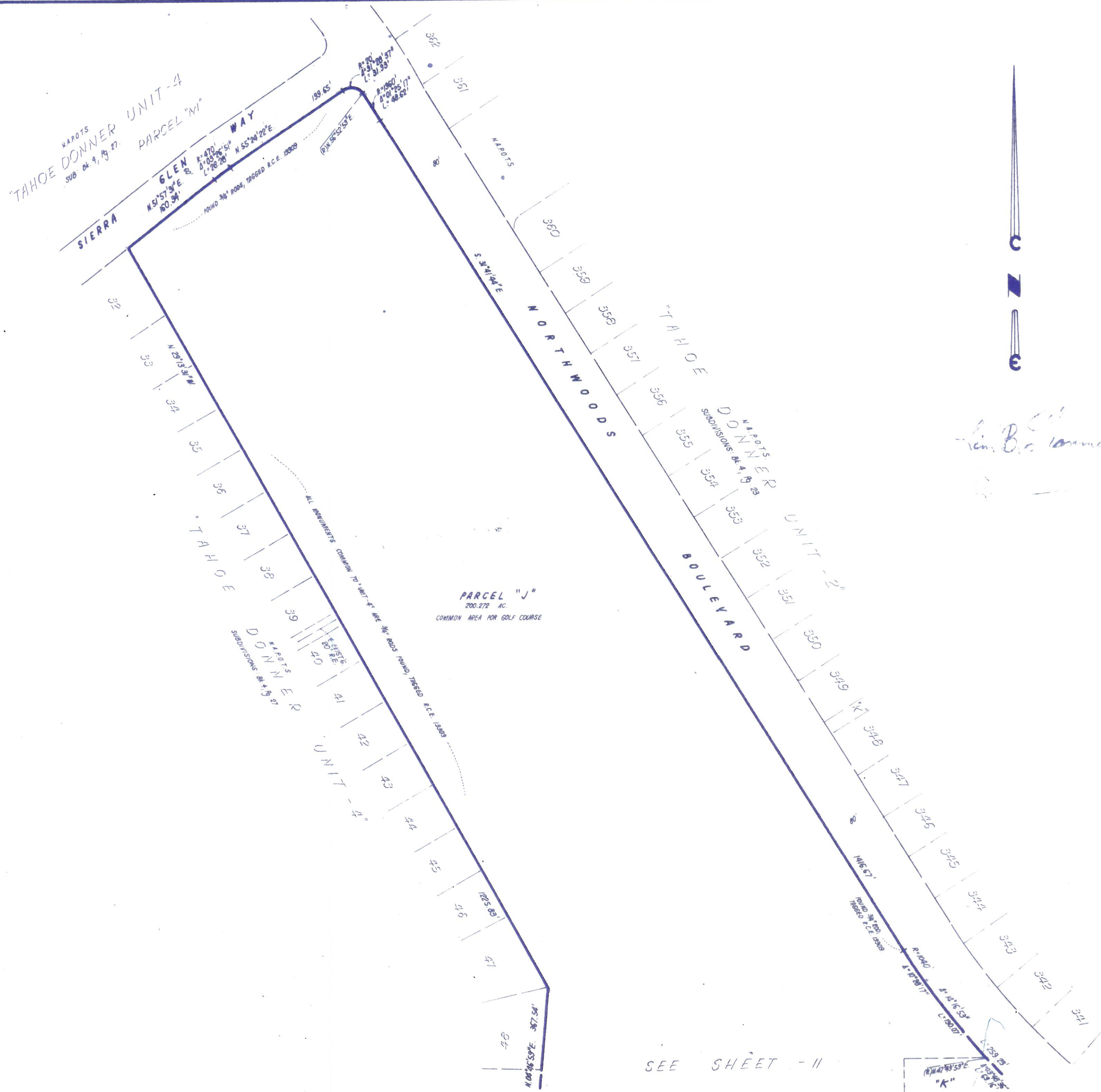
TAHOE DONNER UNIT-II

BEING A PORTION OF
SECTION 5, 6, & 7, T.17 N., R.16 E., M. D. M.
IN THE UNINCORPORATED TERRITORY OF
NEVADA COUNTY, CALIFORNIA
SCALE 1"=100'
CRANMER ENGINEERING, INC.

- NOTES:**
1. 3/4" ROD SET AT ALL EXTERIOR ANGLE POINTS, TAGGED R.C.E. 13303.
 2. 3/4" ROD SET AT ALL INTERIOR LOT CORNERS & ANGLE POINTS, TAGGED R.C.E. 13308.
 3. BASIS OF BEARINGS AS SHOWN ON SHEET 1 OF 12 SHEETS.
 4. N.A.P.O.T.S.: NOT A PART OF THIS SUBDIVISION.
 5. —○— SET 2" PIPE, TAGGED R.C.E. 13303.
 6. —◇— INDICATES UNSET CURVE POINT.
 7. —◆— SET RAILROAD SPIKE AFTER PAVING.
 8. —○— INDICATES 3/4" ROD SET ON CURVE POINT, TAGGED R.C.E. 13303.



Jim B. Cranmer



SEE SHEET - II

UNIT 11-12