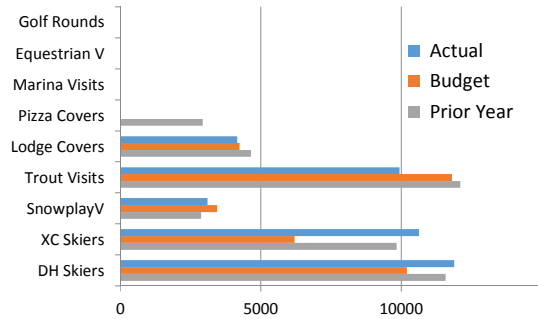
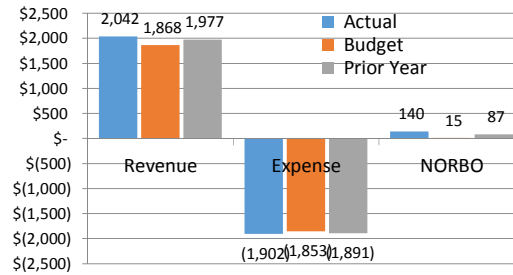




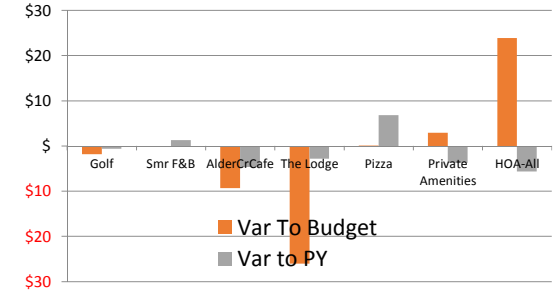
Month | Operating Volumes January 2020



Month | Operating Fund Results January 2020



Month | Key NOR Variances January 2020



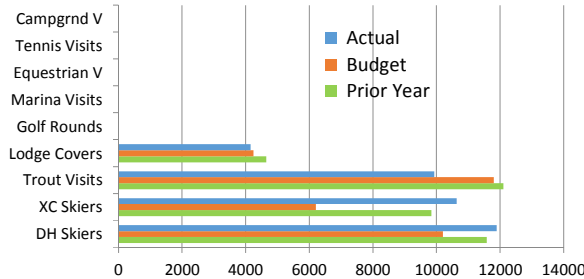
January Revenue: \$2,041,756

173,756/9% fav to Bdg and 64,258/3% fav to PY

January NORBO: \$139,874

124,874/832% fav to Bdg and 53,057/61% fav to PY

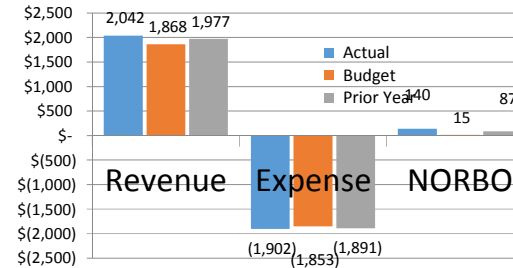
YTD | Volumes For the one month ending January 2020



January YTD Revenue: \$2,041,756

173,756/9% fav to Bdg and 64,258/3% fav to PY

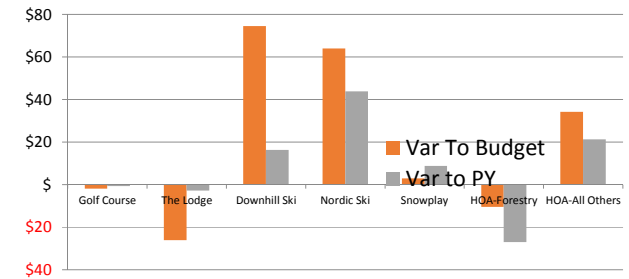
YTD | Operating Fund Results For the one month ending January 2020



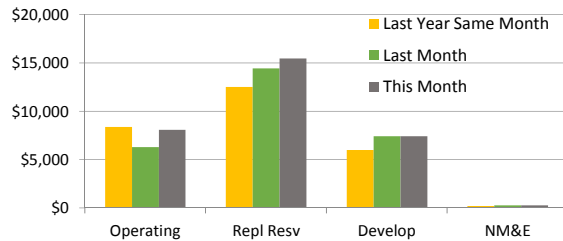
January YTD NORBO: \$139,874

124,874/832% fav to Bdg and 53,057/61% fav to PY

YTD | Key NOR Variances For the one month ending January 2020

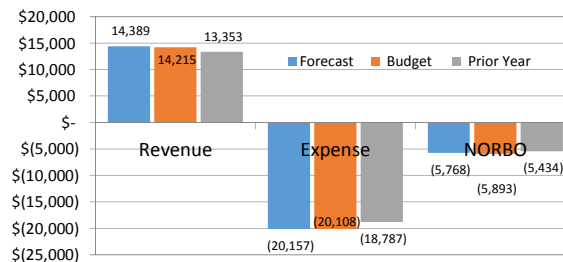


Cash & Investments Balances, as of month end:



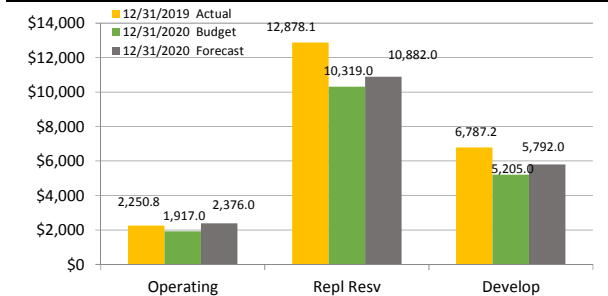
FORECAST ANNUAL 2020

Operating Fund | as of this report date



vs Budget: Revenue Fav 174,000/1% | NORBO Fav 125,000/2%

Members Equity Balances as of Year End 12/31/xx



NORBO = Net Operating Results Before Overhead Allocation

2020 Budget Metrics	TDA Revenue Mix		per Owner	Annual Assessment (AA)		AA Capital Contributions			Operating Fund Revenue Mix			
	AA Revenue	13,367,000		49%	910	44%	5,890,000	Operating Fund	770	67%	4,985,000 (38%)	ReplResv
Operating Rev	14,140,000	51%	1155	56%	7,477,000	Capital Funds	30	3%	194,000 (1%)	New Equip	14,140,000 (71%)	Op Rev
Total Revenue	27,507,000	100%	2065	100%	13,367,000	Annual Assesm TL	355	31%	2,298,000 (17%)	DevelopFd	20,030,000 (100%)	Total
\$27.5 Million Revenue Requirement / Budget			an increase from 2019 of \$100 or 5%			1155 100% 7,477,000 (56%) TL, Cap Fds						